

# Profile of Kanu Heart Foundation

*Registration: CAC / IT / NO 19521 (Abuja – Nigeria); Dated 19th September 2005.*

## Corporate Head Office

No. 80 / 84 Allen Avenue, Ikeja – Lagos

Tel: 08033043769

Email: [info@kanuheartfoundationng.com](mailto:info@kanuheartfoundationng.com)

Website: [www.kanuheartfoundationng.com](http://www.kanuheartfoundationng.com)

London Office: Suite 19 Wembley Point. I Harrow Road, Wembley Middlesex HA9 6DE.

*Coordinator /contact person:*

*Pastor Onyebuchi Abia*

Tel: 08033043769, 08057861818

Email: [buchiabia@yahoo.co.uk](mailto:buchiabia@yahoo.co.uk)

## Trustees / patrons

- *The foundation has board of trustees / patrons who are persons of integrity and social standing amongst whom are:*
- *Nwankwo Kanu (MON, OON, Unicef Ambassador)*
- *Chief Asiwaju Bola Ahmed Tinubu – Former Governor of Lagos State*
- *Chief Segun Osoba – Former Governor of Ogun State*
- *Mr. Ben Bruce – The Chairman, Silverbird Group*
- *Pastor Onyebuchi Abia – Redeemed Christian Church Of God*
- *Mr. Iain Nelson – Former National Marketing Manager, Seven Up Coy.*
- *Dr. Viresh Mahajan – Max Hospital, India – Medical Adviser*
- *Prof. V. O. Ike – Chief Cardiologist, UNTH (Enugu) Medical Adviser*
- *Mr. Morati – President, Inter Milan Football Club. Italy*
- *Arsen Wenger – Arsenal Football Club, England*
- *Patrick Viera – Manchester City Football Club, England*
- *Henry Tiery – United State of America*
- *Mr. Remi Olowude - Industrial and General Insurance*
- *The foundation lost its first Chairman Air Commander Sampson Emeka Omeruah (late) to the cold hands of death on December 4, 2006.*

# Mission Statement

## Vision

- To put back smiles on the faces of children; including adult persons suffering from heart related problems

## Mission

- To give every African child with heart defect a new lease of life as we are committed to achieving our set goals which include:
- Establishing a Cardiac Specialist Hospital in Nigeria;
- establishing a Cardiovascular Centre in various States of the federation where people can walk in and be examined of their heart condition free;
- providing platform for quick medical attention to many heart patients who are still handicapped financially to get treatment in overseas hospitals by bringing Cardiac Surgeons to carry out heart treatment in Nigeria;
- contributing in the area of research findings, lectures and seminars as well as creating the desired awareness necessary for combating heart related problems.

# Accomplishments

- Kanu Heart Foundation has relied on funds donated by the founder – Nwankwo Kanu (OON, MON, Unicef Ambassador, kind hearted individuals, corporate organizations, governments and through fund generating programmes
- Successfully carried out more than four hundred (400) free open heart surgeries
- Partnered with International Children Heart Foundation; Memphis USA to come to the University Teaching Hospital Enugu in 2003, there about 13 open Heart Surgeries were performed by Professor Novick leading other Nigerian doctors.
- Organized international summits as below where free Echocardiography tests were carried out on participants.

S/N	City	State	Date	Chief Host
1.	Abuja	FCT	Oct. 10, 2007	The President, Fed. Rep. of Nigeria.
2.	Ikeja	Lagos	Oct. 15, 2007	Babatunde Fashola, Lagos Sate Governor
3.	Enugu	Enugu	Mar.17-18, 08	Bar. Sullivan Chime, Enugu State Governor
4.	Owerri	Imo	Oct. 20-22, 2008	Chief Ikedi Ohakim, Imo State Governor
5.	PHC	Rivers	Dec. 3-4, 2009	Rt. Hon. C. Amaechi Rivers State Governor
6.	Festac	Lagos	Dec.15 – 18, 2010	The Catholic Archbishop of Lagos

# EVENTS ORGANISED

- The foundation after its Launch at Sheraton Hotels, Ikeja, Lagos in 2000 has organized series of events aimed at rising funds for the foundation.
- These include, fund raising dinners in London 2004 / 2005 / 2006 / 2007 / 2008
- Charity Match in London celebrating Nigeria Independence in London.
- At the home front, we have had the privilege of organizing events like children in need Africa 2003
- Brazil U-17 vs. Nigeria 2003
- U-18 team Soccer match 2003
- Nigeria U-20 vs. Turkey U-18 national team 2003
- Super Falcon vs. Arsenal Ladies of England 2003
- KHF lottery Launch
- Open Heart Surgery by visiting 20 USA surgeons at UNTH Enugu, May 27, 2004
- Kanu and Friends Charity Match at Warri Stadium, Delta State 2006

# Honours and Awards

- *EARTHWATCH OUTSTANDING YOUTH AWARD*-----2004
- *THE RCCG COMMUNITY SERVICE AWARD*-----2004
- *THISDAY NEWS PAPER BEST NGO AWARD*-----2005
- *COMMUNITY SERVICE AWARD*-----2006
- *ROTARY INTERNATIONAL COMMUNITY SERVICE AWARD*-----2007
- *FEDERAL MINISTRY OF HEALTH “BEST NGO YEAR AWARD”*-----2007
- *MEDICAL WOMEN’S ASSOCIATION OF NIG. “MEDICAL WOMEN CELEBRITY AWARD”*-----2007
- *SOCIAL ENTERPRISE REPORT & AWARDS (SERA) “PERSONALITY OF THE YEAR”*-----2007
- *IBB GOLF TOURNAMENT CLUB AWARD*-----2008
- *CERTIFICATE OF RECOGNITION “ACTS OF KINDNESS*----- 2009
- *NIGERIAN HEART FOUNDATION MERIT AWARDS*-----2009
- *THE BRITISH SOCIETY OF COMMERCE (ENGLAND) “HEART OF GOLD*-----2009

# Partners

- *Max Super-specialty Heart & Lung Institute, New Delhi – India*
- *Delhi Heart & Lung Institute, New Delhi – India*
- *Emergency NGO Italy / Salem Centre for Cardiac Surgery, Khartoum, Sudan*
- *Eko Hospitals, Lagos – Nigeria*
- *Mentors Ethicare, Pvt. Ltd, New Delhi - India*
- *Worldwide Management Ltd, Nigeria*
- *Solkenny Builders Nigeria Ltd, Satellite Town – Lagos*
- *Hi-rem Development Services Limited, Ikeja - Lagos*
- *Stagecraft Promotions*
- *BGL Plc, Nigeria*

# PROPOSED KANU CARDIAC CENTRE

*Front view*



FRONT & RIGHTSIDE VIEW



FRONT & LEFTSIDE VIEW



SITE LAYOUT (AERIAL VIEW)



BACK (AERIAL VIEW)



DOCTOR'S & COORDINATOR'S APARTMENTS

(PERSPECTIVE VIEW)



DOCTOR'S & COORDINATOR'S APARTMENTS

(PERSPECTIVE VIEW)



RESTAURANT (PERSPECTIVE VIEW)



SEMINAR HALL (PERSPECTIVE VIEW)



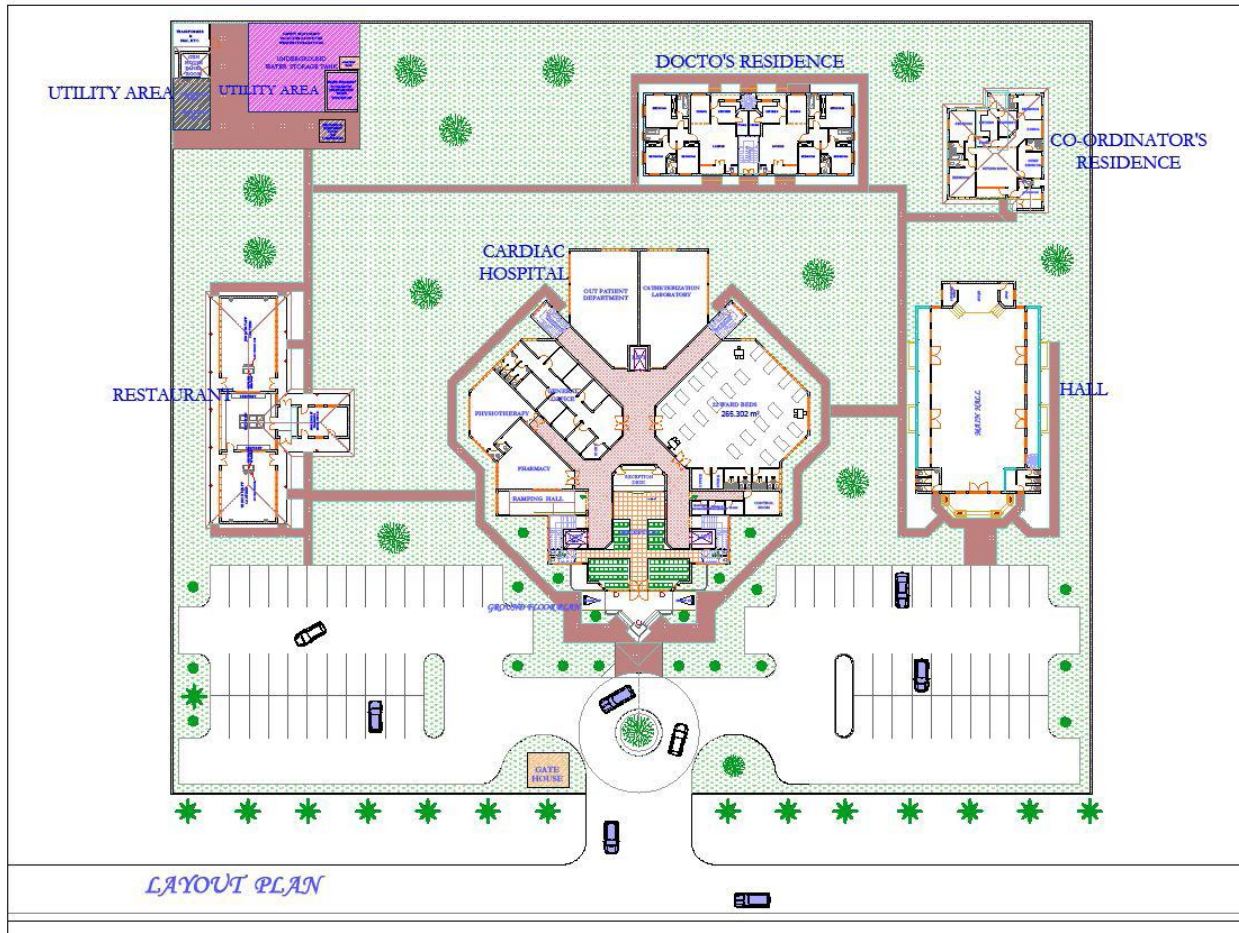
GROUND FLOOR PLAN



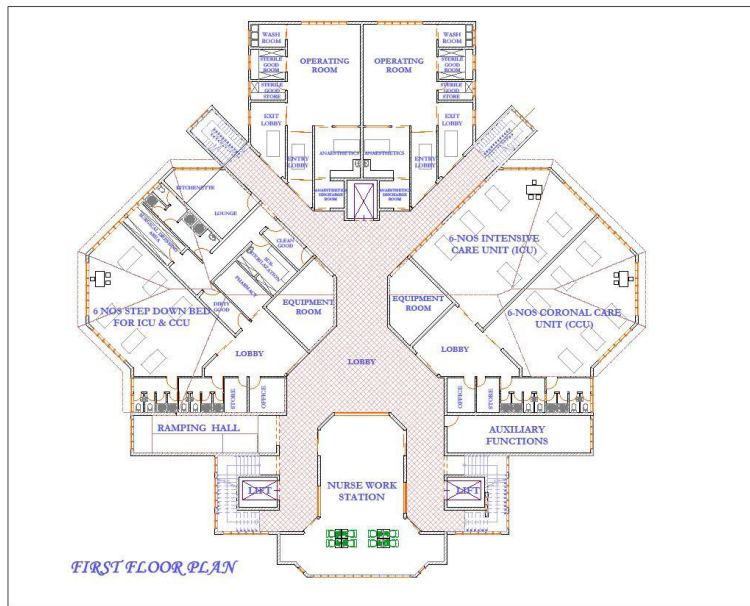
FIRST FLOOR PLAN



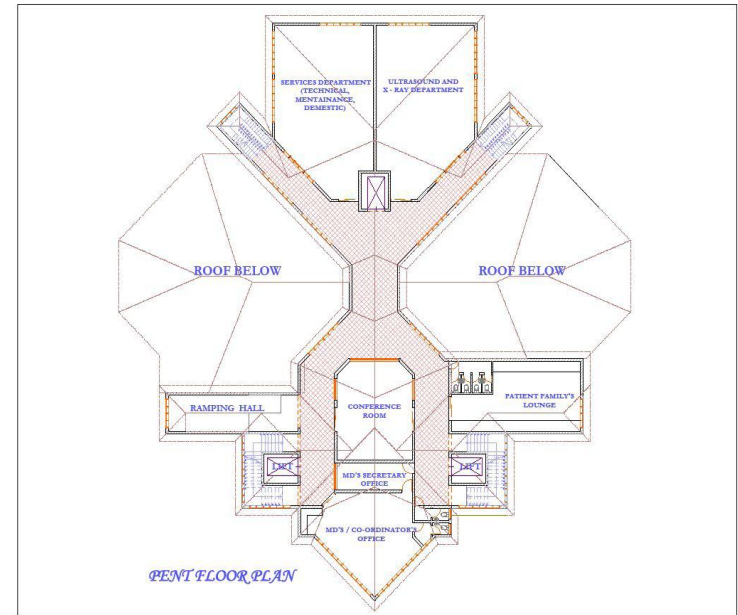
# SITE LAYOUT



## FIRST FLOOR PLAN



## PENT FLOOR PLAN



# OVERVIEW OF CARDIAC SPECIALIST HOSPITAL OF KANU HEART FOUNDATION

## **BACKGROUND:**

**Establishing a Cardiac Specialist Hospital is in the mission statement and the aims and objectives of the Foundation from inception of the Foundation in 2000 the Founder has made it a sine qua non.**

## **OBJECTIVES:**

**The project objective was borne out of the yawning gap in the health sector in the treatment of heart related diseases more especially open heart surgeries and its attendant risk which over the years has made patients seek help in foreign countries like India, Israel, London, USA and Sudan as in the case of Kanu Heart Foundation. In these process huge sums of foreign exchange is expended amidst traveling, Accommodation and sundry expenses. With the growing list of heart patients on our waiting list the establishment and building of a Cardiac Specialist Hospital will no doubt help us in saving more lives and also saving cost.**

## **PROJECT SITE:**

**The Cardiac Specialist Hospital will be situated in the Federal Capital Abuja, where the federal government has given the Foundation a piece of Land for the project, also the central nature of Abuja gives equal access for Nigerian from any part of the country.**

## PROJECT COST

- **The Cardiac Specialist Hospital is expected to cost \$35m (Thirty Five Million Dollars) or N5 billion (Five Billion Naira only) made up as follows;**
- **2 Cardiac O. T's (Each including Heart Lung machine cost about = 434, 000 USD approx.**
- **Area for one Cardiac Cauterization Lab including Cath Lab Machine = 330, 000 USD**
- **40 Bedded Cardiac Hospital with**
- **(a) Six Cardiothoracic I C U beds for Post Operative Cardiac surgery patients**
- **(b) Six Coronary Care Unit beds for Cardiology patients**
- **(c) Six step down beds for stable enough patients to be shifted to I C U / CCU but still require high dependency Care**
- **(d) Rest 22-24 beds for preoperative patients, stable patients requiring Angiography / Angioplasty Device Closure etc. stable patients post surgery prior to discharge including equipments and infrastructure = \$11, 000, 000 USD (Eleven Million US Dollars)**
- **(e) Diagnostic Centre: Dept Radiology Equipment = \$1, 005, 555 USD (One Million Five Thousand Five Hundred and Fifty five)**
- **PATHOLOGY EQUIPMENT = \$ 128, 000**
- **CARDIOLOGY EQUIPMENT:**
- **Has Echo Cardiography (Ultra Machine in Radiology with Cardiac probe that will do dual roles hence no need to purchase echo machine separately = \$17000**

### CONSUMABLES:

- **To run the equipment, smoothly depend on the load on each equipment or on the foot fall of investigations.**
- **T. Support (Software) Diagnostic Centre can run two ways. One manual feeding the data and the second is integrating equipments with computer thereby making everything fully computerized. The Kanu Cadiac Centre will go for the interacting equipment to minimize errors (Error free) and authentication of results and accuracy.**
- **Structural, Electrical, Engineering Design works of the Cardiac Centre = N33, 000, 000 = \$220, 000 USD**

**Consultancy = N42, 000, 000 = \$280, 000**

### UTILIZATION OF THE AMOUNT N5 BN (\$35M)

- **This amount will be used solely for the building and equipping Kanu Cardiac Specialist Hosptial only.**

## **MODE OF OPERATION**

- **It is expected that the mode of operation of the Cardiac Specialist Hospital will be in line with established health norms and practices as well as principles. The centre is expected to be run by professionals in the medical profession with a blend of foreign expertise and home grown medical experts. This mode helps in transfeing of knowledge and expertise to indigenous medical staff. It is expected to run a research centre in future. Specialist Consultants on Cardiology will play prominent roles in the management of the centre with the support staff.**
- **Governing Counsel will be as approved and recommended by the Board of Trustee. Also a management team will run the affairs of the Hospital.**
- **Ownership**  
**Kanu Heart Foundation is the owner of the project and as a charitable non – governmental organization, the Hospital is expected to run under the charitable N. G. O policy and regulatory charter.**
- **Treatment Of Patients:**  
**It is expected that heart patients who are between the ages of 1 – 12 will receive free surgery treatment, 12 – adult will be treated at a reduced fee commensurate with their treatment.**

**Feeding and Accommodation of patients' escorts will be borne by escort/ families. Patients who are admitted will not pay for accommodation.**

- **Project Partners:**  
**Kanu Heart Foundation has secured the services of foreign and reputable heart Hospitals in India and Africa as partners. We also have indigenous partners for the architectural, structural designs in line with modern and international standards.**
- **Asset Management:**  
**Kanu Heart Foundation is putting in place a management funds and asset team that will enable it drive the project upon completion. A project committee for the fundraising has been working assiduously for the past two years to bring project launch to fruition. KHF has also appointed financial advisers and fund managers for the actualization of the project.**

## BREAKDOWN OF FUNDS FOR EACH PHASE OF THE PROJECT

<i>a.</i>	<i>Project launch 2009 – 2011 Dec. expected expenditure</i>	=	<i>N100, 000, 000</i>
<i>b.</i>	<i>Clearing Site, Foundation laying, landscaping, laterite earth filling to make up level average 300mm high</i>	=	<i>N30,000,000</i>
<i>c.</i>	<i>Main building construction up to the ridge comprises two floors with Pent House</i>	=	<i>N492, 500, 000</i>
<i>d.</i>	<i>perimeter fence consisting 500mm high, ground beam 225 x 225 reinforced concrete</i>	=	<i>N25, 000, 000</i>
<i>e.</i>	<i>Parking lots and Circulation road</i>	=	<i>N65, 000, 000</i>
<i>f.</i>	<i>Walking consisting 100mm, thick interlocking paving size 175 x 450 mm</i>	=	<i>N12, 000, 000</i>
<i>g.</i>	<i>Other external works to allow for drawing, electrification, water, Generator house 2 500 KVA approved mode                      Generator</i>	=	<i>N100, 000, 000</i>

S/N	NAMES AND COUNTRY OPERATED	AGE	SEX	STATE / COUNTRY	DIAGNOSIS	YR /OPT
1.	OKWUDE (LONDON)	10 MTHS	M	OYO		2000
2.	ENITAN (LONDON)	2 YRS	F			2000
3.	OKWARA STELLA (ISRAEL)		F	DELTA		2002
4.	ZACHARIAH (ISRAEL)	9 YRS	M	OGUN		2002
5.	ABASIONO JAMES (ISRAEL)	2 YRS	M	AKWA-IBOM	VSD	2002
6.	ASIEGBULE CHIDOZIE	21 YRS	M	IMO	AVR, MV REPAIR	2002
7.	ANYABUIKE C. (ISRAEL)					2002
8.	OJOMO OLUWATOBI (ISRAEL)	18 YRS	F	LAGOS	ASD	2003
9.	BASSEY TITUS (ISRAEL)	11 YRS	M	AKWA-IBOM	Rheumatic Heart Disease (Severe Mitral Regurgitation)	2003
10.	HENRY NWOPI (ISRAEL)	10 YRS	M	IMO	ATERIAL SEPTAL DEFECT	2003
11.	ALLOTEY DAVID CALEB (SRAEL)	5 YRS	M	GHANA	TOF	2003
12.	ADELEKE MICHAEL (ISRAEL)	10 YRS	M	OGUN	TOF	2003
13.	ADESANYA LEKAN (ISRAEL)	11 YRS	M	OSUN	TOF	2003
14.	EGAHE JOSEPH (ISRAEL)	5 YRS	M	EDO	VSD & ASD	2003
15.	CHINECHE OKPOKO (ISRAEL)	8 YRS	F	ANAMBRA	PARTIAL AV CANAL	2003
16.	KAFIRAT ORAFEREMI (ISRAEL)	8 YRS	F	OSUN	TOF	2003
17.	HASSAN AYOMIDE (ISRAEL)	5 YRS	M	OGUN	PARTIAL AV CANAL	2003
18.	LAWAL KOREDE (R.I.P) (ISRAEL)	2 YRS	M	ONDO	PARTIAL AV CANAL	2003
19.	NWANNA DANIEL (R.I.P) (ISRAEL)	2 YRS	M	ANAMBRA	TRICUSPID ATRASE	2003
20.	CHUNWUBA IFENWEMBI (ISRAEL)			ANAMBRA		2003
21.	AHAMEFULA ONYA (ISRAEL)			ABIA		2003
22.	DAMILOLA ADEDINI (ISRAEL)			LAGOS		2003
23.	<b>PATIENTS OPERATED IN UNTH ENUGU</b>	<b>BY</b>	<b>KHF</b>	<b>SURGEONS</b>	<b>FROM</b>	
24.	MARTINS EHIHIE (ENUGU)		M	EDO	TOF	2003
25.	NAFINJI PRECIOUS (ENUGU)		F	TARABA	VSD	2003
26.	OBINUJU UZOCHUKWU (ENUGU)	18 YRS	F	ENUGU	Malignant Thymoma	2003
27.	ABBA NANCY (R.I.P) (ENUGU)		F	BENUE	TOF	2003
28.	UMAR ABUBAKAR (R.I.P) (ENUGU)		M	BAUCHI	VSD	2003
29.	OLUJOBI DAVID (ISRAEL)	16 YRS	M	OGUN	TOF	2004
30.	FRANCIS JENNIFER (ISRAEL)	10 YRS	F	DELTA	TOF	2004
31.	USHIE CHARLES (ISRAEL)	5 YRS	M	CROSS RIVER	TRICUSPID ATRIAL	2004
32.	HERBERT C. HERBERT (ISRAEL)	8 YRS	M	DELTA	TOF	2004
33.	AJAO ALAYINKA (ISRAEL)	11 YRS	M	OSUN	TOF	2004

34.	JUDE EMMANUEL	“	14 YRS	M	ANAMBRA	VSD	2004
35.	ISAAC WISDOM (R.I.P)	()	2 YRS	M	ANAMBRA	VSD	2004
36.	QUINTON EZE	“	4 YRS	M	ANAMBRA	PDA SHUNT	2004
37.	FOLRA OGBU	“	28 YRS	F	DELTA	TOF	2004
38.	BLESSING NWOBODO	“	7 YRS	F		SEVERE PULMONARY HYPERTENSION	2004
39.	UGOCHUKWU NKINKA	“	3 YRS	F	ANAMBRA	VSD	2004
40.	EKENE BRIGHT	“	9 YRS	M	ANAMBRA	ASD	2004
41.	EBIMBERE FRANCESS	“	26 YRS	F	BAYELSA	VALVE REPLACEMENT	2004
42.	CHISOM AKUEWULU (R.I.P)	“	6 YRS	F	ANAMBRA	TOF	2004
43.	HAJARA WAZIRI	“	12 YRS	F	ADAMAWA	VALVE REPAIR	2004
44.	EGBO CHIGOZIRIM	“	5 YRS	M		TOF	2004
45.	HELEN	“	21 YRS	F	DELTA	VSD	2004
46.	GIDEON UGWUANYI	“	9 YRS	M		TOF	2004
47.	DEBORAH ONABADEJO	”	8 YRS	F		TOF	2004
48.	EDEH KWERECHI	“	4 YRS	M		TOF	2004
49.	GRACE AYEGBA	“	10 YRS	F	KOGI	TOF	2004
50.	OKOROCHA UGONNA	“	8 YRS	M	IMO	VSD	2004
51.	ODIGBA K. UCHE	“	5 YRS	M	ABIA	CHRONICLE MITRAL VALVE DISEAE OF RHEMATIC ORIGIN	2004
52.	VICTORIA JAMES	“	28 YRS	F	KOGI	MITRA VALVE REPLACEMENT	2004
53.	ULOMA EKEH	“	22 YRS	F	ANAMBRA	VSD	2004
54.	OBAFEMI BEWAJI	“	19 YRS	M	OGUN	VSD	2004
55.	MAMUDU YAKUBU (R.I.P)	“	14 YRS	M	BAUCHI	VALVE MITRAL REPLACEMENT	2004
56.	TOCHUKWU MORDI	“	10 YRS	M	DELTA	VSD	2004
57.	MIKE OKOYE	“	52 YRS	M	ANAMBRA	HEART ENLARGEMENT & CATH	2004
58.	KAREEF YUSUF	“	9 YRS	M		MITRA VALVE REPLACEMENT	2004
59.	CHIDINMA AMAECHI	“	4 YRS	F	ANAMBRA	VSD CLOSURE	2004
60.	UKPONG DOMINIC (R.I.P)	“	14 YRS	M	AKWA - IBOM	SHUNT & VSD	2004
61.	PECULIAR E.	“	5 YRS	F	DELTA	VSD CLOSURE	2004
62.	OYEGUNLE OPEYEMI	“	3 YRS	M	OGUN	LUNGS DAMAGES (Beyond repair)	2004
63.	ONYENEZIDE LILIAN	“	21/2 YR	F	ANAMBRA	VENTRICULAR SEPTAL DEFECT	2004.

64.	FAVOUR AMUZURIKE	()		F	IMO	PDA	2004
65.	CHARLES USHIE	“	5 YRS	M	CROSS RIVER		2004
66.	OSHIREYE AHMED	“	3 ½ YRS	M	OGUN	TETRALOGY OF FALLOT	2004
67.	KELECHI ONWUKWE	“	11 YRS	F			2004
68.	OSHINOWO FAWAZ	“					2004.
69.	ADEBAYO OLUFUNMILAYO	“	4 YRS	F	OGUN	TOF	2004
70.	AJAYIO ADIPO	“			ONDO		2004
71.	OKORO LONGINUS	“			IMO		2004
72.	JOSEPH EGBAGBE	“					2004
73.	EMENIKE GIDEON	“	12 YRS	M		VSD	2005
74.	ADEBAYO FUNMILAYO	“	4 YRS	F	KWARA	VSD & ASD	2005
75.	OKOROJIE OHIGBO L.	“	5 YRS	M		VSD	2005
76.	TULUMA I.	“	5 YRS	F		BEYOND REPAIR (UNOPERABLE)	2005
77.	OKWEKU BLESSING	“	28 YRS	F		PDA	2005
78.	AMADI CHIDIGOR S. (R.I.P)	“	4 YRS	F	IMO	BEYOND REPAIR (UNOPERABLE)	2005
79.	OPAWOLE LATIFAT	“	14 YRS	F	OGUN	TOF	2005
80.	OKEKO THEOLINA		8 YRS	F	IMO	VSD & ASD	2005
81.	DANIEL KEMI (R.I.P)	“	2 YRS	F		VSD	2005
82.	ARIYO J. MAYOWA (R.I.P)	“	16 YRS	M	OSUN	MITRA VALVE REPLACEMENT	2005
83.	ISANG OLUMIDE ANITA	“	29 YRS	F	AKWA-IBOM	VALVE REPLACEMENT SHUNT	2005
84.	EVBUOMWA ESOSA	“	10 MTH	M		PDA	2005
85.	B. KAREEM	“	8 YRS	M	OGUN	TOF	2005
86.	ALABI	“	2 YRS	F	KWARA	ASD	2005
87.	EMMANUEL ANYANWU	“	17 YRS	M	IMO	VSD	2005
88.	OLUCHI NJOKU	“	4 YRS	F	IMO	PDA SHUNT	2005
89.	OYEMADE COMFORT	“	8 YRS	F	OSUN	TOF	2005
90.	OPARANOZIE UCHENNA	“	2 YRS	M	IMO	CATH & PDA SHUNT	2005
91.	IKOTUN BUSAYO	“	14 YRS	F	OGUN	TOF	2005
92.	FAITH ANIEHE	“	5 YRS	F		TOF	2005
93.	AMUSA TEMITOPE	“	6 MTH	M		VSD	2005
94.	ESTHER OYINDAMOLA FAWOLE	“		F			2005

95.	IDINFON SAMATHA N.	“	7 YRS	F		ASD	2005
96.	CHUBA IFENDI		11 MTHS	M		Left Atrial Emlargement/sinus Tachycardia	2005
97.	OMOWUNMI UZOR		5 YRS	F		SUBARTIC VSD	2005
98.	BILKISU SHEHU		3 YRS	F		CONGENITAL HEART DISEASE	2005
99.	EMMANUEL OGBUAGU		25 YRS	M		INCOMPETENT MITRAL VAVLE /PULMONARY HYPERTENSION	2005
100.	BISOLA SANMI		11MTHS	F		CYCNOTIC CCONGENITAL HEART DISEASE	2005
101.	OLUFUNSHO KOLAWOLE		30 YRS	M		AORTIC VALVE DISEASE	2005
102.	ONYEKA ADODO		2 YRS	F		OPEN HEART DISEASE	2005
103.	LOLADE SUBAIR		25 YRS	F		THICKENED MITRAL VALVE	2005
104.	OMENUWA		14 YRS	F		ATRIAL SEGTAL DEFECT (SECUMDUM)	2005
105.	KEMI BANJO		30 YRS	F		RHUMATIC VALVULAR DISEASE	2005
106.	PEPUSUZIE OBI					PAEDIATRIC CRDIAC AILMENT	2005
107.	AKINOLA FAGBON					HYPERTROPHIC CARDIOMYOPATH	2005
108.	AHAMEFULA ONYA		11 MTHS	M		DUCTUS ARTERIOSUS	2005
109.	DAVID JOSEPH		8 YRS	M		MENTRICULAR SEPTAL DEFECT	2005
110.	CLARA OHAJUBA		28 YRS	M		MITRAL VALVE DISEASE	2005
111.	FABIAN C. EZE		35 YRS	M		MITRAL VALVE DISEASE	2005
112.	JOSIAH OLANYEMI		33 YRS	M			2005
113.	MMELICHUKWU ILOKA		2 YRS	F		SMALL SECUDUM ASD	2005
114.	JOSEPH OLADIPOPU AJAYI		10 MTHS	M		OUTLET VSD	2005
115.	UMEZURIKE SAVIOUR CHINEMEREM		6 MOTHS	F		CARDIOMEGALY WITH LEFT VENTRICULAR	2005
116.	OJUMOBI SAMUEL	()	2 YRS	M	IMO	PDA SHUNT	2005
117.	VICTOR EZEALA (R.I.P)	“	5 MTHS	M	ANAMBRA	CATH	2005
118.	FASOYIN	“	5 MTHS	M		VSD	2005
119.	NJOKU DIMACUS J.	“	45 YRS	M	IMO	SEVERE INTUNDIBULAR/VALVULAR PULMONARY STENOSIS	2005
120.	EMMANUELLA	“	7 MTHS	F	IMO	BANDING	2005
121.	WARAH ITOFA	“	7 MTHS	M		TOF	2006
122.	NZE CHRIST SOMTO	“	10 MTH	M	ANAMBRA	VSD	2006

123	ARINKA TAIWO (R.I.P)	“	9 MTH	M	KOGI	LUNGS DAMAGES & VALVE REPAIR	2006
124	OBIECHINA AZUKA	“	3 YRS	M	DELTA	VSD	2006
125	IBRAHIM M.	“	11 YRS	M	NASARAWA	BANDING	2006
126	ONYIAORA W. ZIMUZOR	“	13 YRS	M		ACYANOTIC CONGENITAL HEART DISEASE VSD	2006
127	FAWOLE O. ESTHER	“	5 YRS	F	OGUN	ACYANOTIC CONGENITAL HEART DISEASE CASD & VSD	2006
128	PATRICK CHUKWU (R.I.P)	“	18 YRS	M		CONGENITAL HEART DISEASE	2006
129	UDEZE BLESSING (R.I.P)	“	6 YRS	F			2006
130	NWANNA DANIEL (R.I.P)	“	1 YR	M		PFO	2006
131	ABBA (R.I.P)	“	6 YRS	F			2006
132	LAWAL KOREDE (R.I.P)	“		M		VSD	2006
133	OMAR MUHAMMED (R.I.P)	“	3 YRS	M		LARGE VSD	2006
134	CHINEMEMA	“	1 YR	M		VSD	2006
135	OFURUM (R.I.P)	“					2006
136	BINTU YUSUF (R.I.P)	“	5 YRS	F		TOF	2006
137	ANAFOR FRANCIS (R.I.P)	“		M		VSD	2006
138	ANIEBO NONSO (R.I.P)	“				LARGE VSD	2006
139	MOSHOOD LAWAL (R.I.P)	“	8 MTH	M		PDA	2006
140	GRACE AIGBEKAN	“	13 YRS	F		TOF	2006
141	THOMPSON ESTHER	“	4 YRS	F	AKWA-IBOM	TOF	2006
142	CHIDOZIE ASIGBULE ()				ANAMBRA		2006
143	NJOKU	“					2006
144	OJUMOBI SAMUEL (R.I.P)	“					2006
145	IVARAH ITOFA						2006
146	NWAKAMMA IKENNA	“					2006
147	OLUWASEYI DAVID	“					2006
148	TITILAYO AKOSILE			F			2006
149	OLUWADEMILADE AFOLABI			F			2006
150	OKEKE ALICE UCHENNA		16 YRS	F		PASSPORT NO A3387879A	2006

151	FASASI A. ADEYINKA						2006
152	JOSEPH EYIMOFE	“	20 YRS	M	DELTA	ENLARGE	2006
153	ESTHER THOMPSON	“	3 YRS	F	AKWA-IBOM	VSD	2006
154	NOBLE CHIKA	“	4 YRS	M	ABIA	PDA SHUNT	2006
155	ROLEOLA BASIRAT OPEOLUWA	“	15 YRS	F	OGUN	2 VALVULAR REPLACEMENT	2006
156	WATCHMAN OSHEKUN		14 YRS	M		Rheumatic Valvular Heart Disease	2007
157	SAMUELA MATILUKURO		2 MTHS	F	OGUN		2007
158	NNAMANI SUNDAY CHARLES	“	28 YRS	M	IMO	DILATED RA MITRAL VALVE PROLAPSE	2007
159	ISAAC OLUWASEUN	“	13 YRS	M	ONDO	Sub-aortic Ventricular Septal Defect	2007
160	ANITA KEHINDE STEPHEN	“	4 YRS	F	KOGI	Small VSD (KIV Pink TOF)	2007
161	ELIZABERTH IKE	“	9 YRS	F	ANAMBRA	Large VSD, Right Ventricular Hypertrophy Aorta pulmonary stenosis	2007
162	OKAFOR ADAOBI	“	15 MTH	F	ANAMBRA	Tetralogy of Fallot	2007
163	OSINACHI OHIRI O.		6 MTHS	M	IMO	Dextrocardia with an Acyanotic Congenital Heart Disease	2007
164	DEBORAH OLOGUN (R.I.P.)		3 MTHS	F			2007
165	ONWUKA CHUKWUEMEKA (R.I.P.)		10MTHS	M	ABIA	Tetralogy of fallot with AVCD with Down Syndrome	2007
166	JAMES MITCHEL		9 MTHS	M	DELTA	Double inlet right Ventricle with transposition of great arteries.	2007
167	UMERI PRECIOUS		5 YRS	M	DELTA	Congenital Heart Diseases from VSD, Eunsenmeger Complex	2007
168	MERCY JEROME		5 YRS	F	DELTA	Membranous ventricular Septal Defect	2007
169	AKANJI OLADOTUN O.		27 YRS	M	OYO	Constructive Pericaditis	2007
170	OLUCHI NJOKU (2 <sup>nd</sup> surgery) (R.I.P)		7 YRS	F	IMO	Tertalogy of Fallot	2007
171	EMEH ANGELA		27 YRS	F	IMO	Ventricular Septal Defect	2007
172	EKUGBAWA EGUONOR		6 YRS	F	DELTA	V S D	2007
173	MELODY ADESINA		16 YRS	F	OYO	Congenital Heart Disease	2007
174	OWOLABI OREOLUWA		5 YRS	F	OSUN	Tetra logy of Fallot	2007
175	AZIKIWE ONYEKA		19 YRS	F	IMO	Tetralogy of Fallot with poor Cardiac Compensation	2007
176	UMEKWE CHINECHEREM		6 MTHS	M	ANAMBRA	Tetra logy of Fallot	2007
177	NWOKEOCHA UGOCHUKWU (R.I. P)		27 YRS	M	IMO	Dilated cardiomyopathy with severe mitral valve Regurgitation	2007

178	EMAMOKE OKORO EMILIA	2 YRS	F	DELTA	Large membranous Ventricle defect	2008
179	UTIBE BASSEY EKONG	5 YRS	M	AKWA IBOM	VSD with double outlet right Ventricle	“
180	LAZRUS ERO	22 YRS	M		Tetralogy of fallot	“
181	NDUKAUBA ULOMA (R. I. P)	17 YRS	F	IMO	Congenital heart disease-single ventricle	“
182	NWOKEOCHA UGOCHUKWU (R. I. P)	27 YRS	M	IMO	Dilated cardiomyopathy with severe mitral valve Regurgitation	“
183	CHARLES EZE		M			“
184	CHIMEZIE	32 YRS	F	DELTA	VSD & MV PROLAPSE	“
185	OPEMIPO JOSEPH	2 YRS	F		Large Ventricular Septal defect 9Pulmonary TB)	“
186	CHINWEUDO ASOGWA,	21 YRS	F		PDA	“
187	KENNETH EJEDOGHAOBI	23 YRS	M	ANAMBRA	Dilated Chamber VSD	“
188	OLUWATOMININU ODUTAYO	2.2 YRS	F	OGUN	Tetralogy of Fallot	“
189	UKABAM CHIAMAKA	8 YRS	F	IMO		“
190	OGBA ANGELA OSELUONAIME	3 YRS	F			“
191	EKECHUKWUCHIDI EVARITUS (R. I. P)		M	IMO		“
192	EMELOGU		F	IMO		“
193	CHIBUIKEM OGUDORO	5 MTHS	M	IMO		“
194	BREAKTHROUGH AGABA	2 YRS	M		Large rtrial Septal Defect, Right univentricular Heart with a Transposition of Great Arteries	2009
195	OSUJI GREGORY (R. I. P)	22 YRS	M	IMO	Aortic Valve Incompetence	“
196	IGEME ECHU	22 YRS	F	CROSS RIVER	Fair Contractility	“
197	CHIDOZIE ASIEGBULE	23 YRS	M	IMO		“
198	OSOBA VIRTUE	9 MTHS	F		Persistent Truncus Arteriosus	“
199	CHIMA MARTINS	2 YRS	M	IMO	Large VSD with Significant Haemodynaemic Changes	“
200	OKPUNOR RHEMA	3 MTHS	F	DELTA	Large Membranous VSD	“
201	NNAJI PROMISE	1 ½ YRS	M	ABIA	Tetralogy of Fallot	“
202	VIRGINIA OKOLIE	45 YRS	F	IMO		“
203	OPARAUGO	60 YRS	M	IMO		“
204	ONWUTUELO GOODNESS	9 YRS	F	DELTA	Ventricular Septal Defect	“
205	RAPU NGOZI JENNIFER	17 YRS	F	DELTA	Rheumatic Heart Disease	“
206	ONYEADURU OLUEBUBE	7 YRS	F	IMO	Tetralogy of Fallot	“

1.	JEREMIAH JEFFREY	4 YRS	M	NASSARAWA	TOF & Mitral Valve Regurgitation	2009
2	AMINU BASIT	5 YRS	M	KWARA	Tetralogy of Fallot with Infundibular & Valvular Stenosis	“
3	GOODNEWS AMODU	7 YRS	F		CONGENITAL HEART DISEASE	“
4	EMMANUEL GILBERT	9 YRS	M	RIVERS	MITRAL INCOMPETENCE	“
5	OYEBAMIJI DAMILOLA	13 YRS	F	OGUN	TETRALOGY OF FALLOT	“
6	OLUFOWORA KAREEM	17 YRS	M	ONDO	SINGLE ARTRIUM	“
7	UKWUBILE JUDITH	22 YRS	F	ANAMBRA	TETRALOGY OF FALLOT	“
8	ORJI CLETUS	28 YRS	M	EBONYI	CONGENITAL HEART DISEASE	“
9	ANIAGU JANE	38 YRS	F		MITRAL VALVE	“
1.	DAS-OGBA ANGELA	3 YRS	F		TOF	2010
	OKWE BUCHI	16 YRS	M	DELTA	Severe Aortic Stenosis / Aortic Regurgitation	
	OGU GODWIN	9 YRS	M	-		
	ADEFOWORA ADEYEMI	2 YRS	M	OGUN	TOF WITH ASD	
	JOSEPH OPEMIPO	2 YRS	F	OSUN	TOF	
	RAJI	7 MTHS	F	-	TOF	
	OHIRI ANTHONY OSINACHI	2 YRS	M	IMO	TOF	
	ONYIKE PRAISE	3 YRS	F	ABIA	TOF	
	HENRY UGOCHUKWU	4 YRS	M	EBONYI	TOF	
	AKINDELE FAVOUR	7 YRS	F	EKITI	VSD / TOF	
	OMODUNEFÉ DANIEL	5 YRS	M	DELTA	TOF	
	IKOOJO STEPHEN	8 YRS	M	KOGI	COMPLICATIONS OF VSD	
	NNAMANI PRECIOUS	10 YRS	M		TETRALOGY OF FALLOT	
	OSHEWE FELIX	42 YRS	M		MITRAL AND AORTIC VALVE DISEASE	
	BRAIMOH OLUWATOLOGU JEREMY	9 MTHS	M	OYO	SECUNDUM ASD, MEMBRANOUS VSD	
	ECHEFU PAUL CHIEMEKA	28 YRS	M		Rrheumatic aortic & mitral valve disease with Regurgitation	
	ONYEJI CHUCHU JOSEPH	12 YRS	M	ABIA	TOF, Secundum ASD	
	OKOROCHUKWU DESMOND CHIMEZIE	32 YRS	M	IMO	Secundum Arterial Septal Defect	
	VICTOR ENEFIOK	2 YRS	M	AKWA IBOM	PDA	
	MADU CHIGOZIE CHINEMEREM	26 YRS	M	IMO	LARGE VSD	